

**REPUBLIC of TURKEY
ISTANBUL
METROPOLITAN MUNICIPALITY**

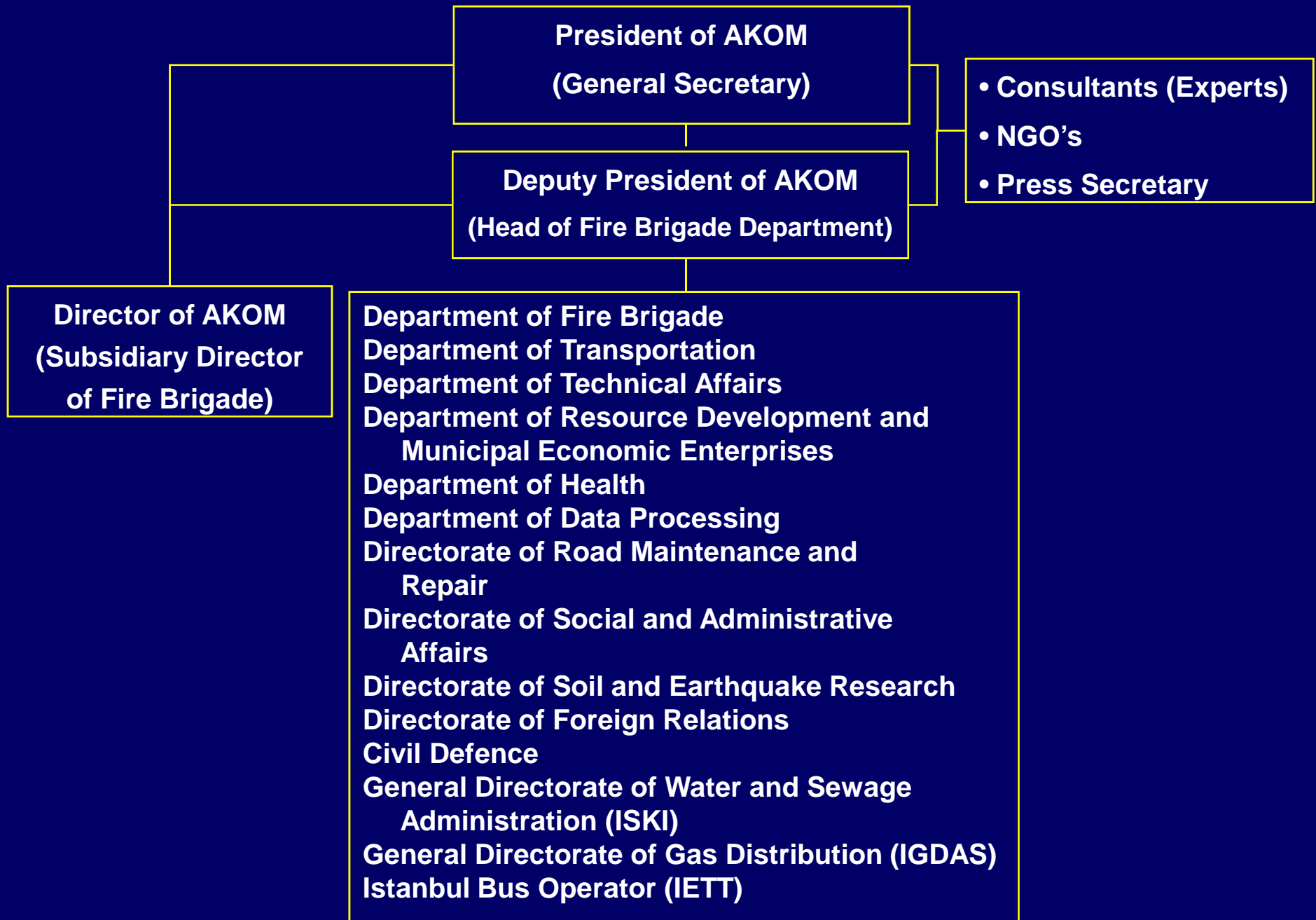
**STUDIES on
DISASTER
PREPAREDNESS**

AKOM 2007

- No: 7269 Disaster Law,
- No: 586 Decree Law,
- No: 5216 Metropolitan Municipality Law,
- 30.03.1998 / 98-403 Main Order of Istanbul Governorship,
- 12.12.2000 date and No: 686 Act of Istanbul Metropolitan Municipality Parliament

- To provide coordination and cooperation between the related agencies and the units of Metropolitan Municipality to mitigate the effects of any type of damages before disaster, on disaster time and post disaster period.
- To coordinate the assignments of Metropolitan Municipality by the orders from the Mayor of IMM and Crisis Center of Province.
- To organize the search and rescue teams which are well trained, to lie ready for any task which is under the responsibility of the Municipality.
- To prepare weekly, monthly and annual reports by monitoring the seismic activity in the World, Turkey and Marmara Region.
- To digitize the precipitation data's and to prepare the graphics of the meteorology regions of Istanbul and to inform the related units of the municipality.

ORGANIZATIONAL CHART





In this building project, raft-foundation equipment which increases building resistance against earthquake has been chosen as basic equipment. On the other hand, by using high resistance reinforced concrete BS40, ironless concrete BS20, 150 dose rubble concrete, concrete steel BÇIII as iron reinforcement, concrete steel BÇ I in S iron and lateral reinforcement, dramix against to being cracked, super concrete plasticizer equipments and vibrator; the building structure was provided to work completely. It has been calculated that this building can resist on **magnitude 8.3 in Richter Scale**.

AKOM Building is constructed as a sample of the Disaster Management Center in Los Angeles , USA.



Display Systems :

Videowall System : It is formed of 32 cubes with 48 m² size which can show 128 different images from computer, network and video sources in different sizes at the same time.



Display Systems :

Plasma and LCD Systems: There are two Plasma systems (5x4 and 5x2 PDP Wall) and two LCD systems (2x2-twice). All videos coming from 128x128 video matrix can be displayed.



Display Systems :

Modis (LCD with remote control) : 30 times MODIS are placed in the meeting hall. 128 different images from computer, network and video sources can be displayed.



Display Systems :

67" Smart Board (Touchable screen)



Audio System :

Microphone System : It is formed of wireless and cable microphone systems

Simultaneous System: It supports translation of two foreign languages

Audio Mixer : The audio signals coming from 16 different sources can be transferred to main audio system.

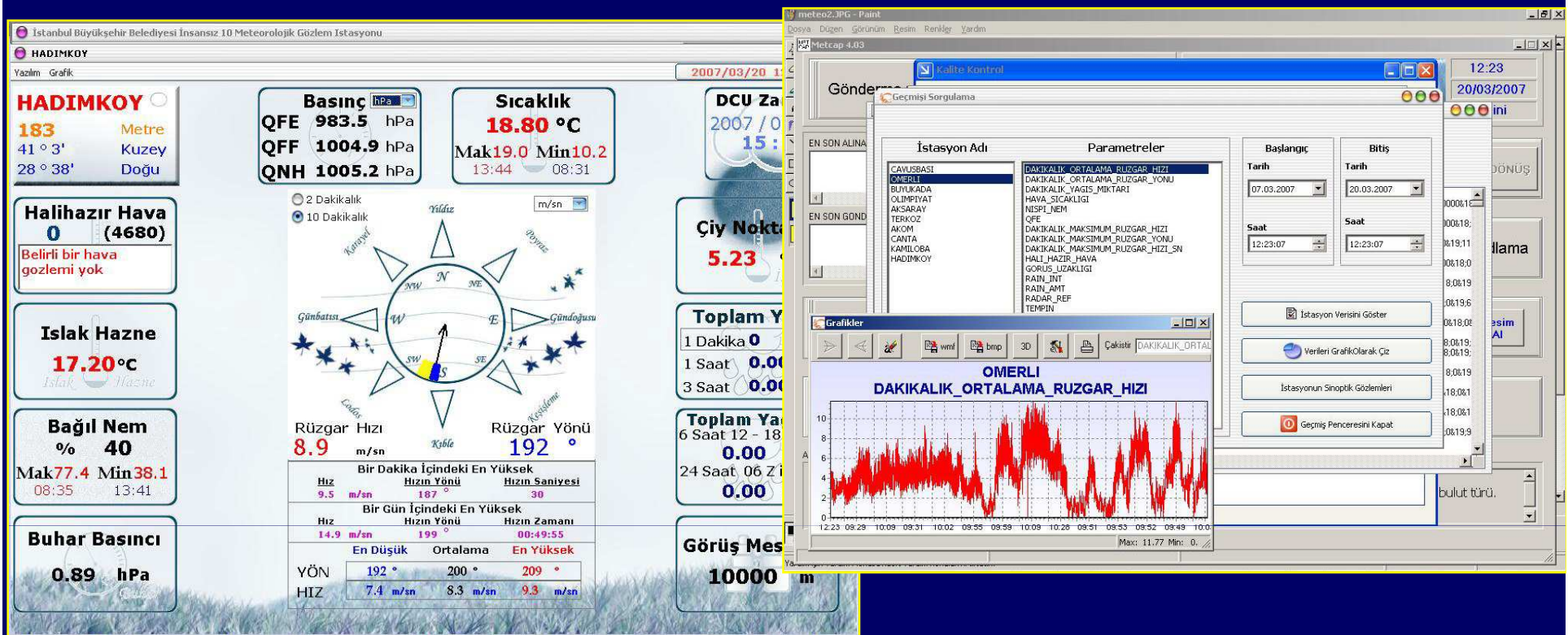


Control and Recording System:

Work Stations : 11 times work stations are used for controlling of video and audio systems.

Recording Devices: There are DVD, DVCAM, SVHS, VHS, VCD, DAT TAYP devices for recording video and audio. Records can also be edited and re-montaged for the distribution.

Matrix Systems : They are used for transferring the signals coming from different sources (like RGB, cameras, TVs) to different locations (like Videowall, PDP, etc.)



Servers :

Back-up Servers for I.M.M Units: The back-up data of the units and companies of Istanbul Metropolitan Municipality are being transmitted to the servers of our center by the fiber optic cables.

Meteorological Server : It provides to take and store data from 10 different meteorological stations which belong to Istanbul Metropolitan Municipality.

İBB ATSIP Uygulaması

Dosya Standart İşlemler Araçlar Harita İşlemleri Analiz İşlemleri Ayarlar Yönetim Pencere Yardım İBB Yönetim İBB A

Harita Penceresi

Araç İzleme Konsolu

| Sıra | Araç | A | Son K |
|------|------------|------|-------|
| 1 | Loder C.51 | 15.0 | |
| 2 | 06 AD 1366 | 16.0 | |
| 3 | 34 AC 0337 | 18.0 | |
| 4 | 34 AC 0338 | 18.0 | |
| 5 | 34 AC 0339 | 18.0 | |
| 6 | 34 AD 5534 | 16.0 | |
| 7 | 34 AIZ 62 | 16.0 | |
| 8 | 34 BB 7782 | 18.0 | |
| 9 | 34 BB 7783 | 18.0 | |
| 10 | 34 BB 7787 | 16.0 | |

Tüm Araçları Seç

Durdur

Araç İzleme

Etiketlendir Etiket Türünü Seçiniz: Plaka Göster

MÜDÜRLÜK BİLGİSİ

İzlemek İstenilen Araç Müdürlüğünü Seçiniz.

Acil Yardım AKOM

Cbs
Deniz
Hepsi
İtfaye
Sivil Savunma
Trafik
Yol Bakım

Arama Seçenekleri
IMEI NO SIM NO PLAKA Listelenen Seçme

| Acil Yardım | IMEI NO | SIM NO | PLAKA | Listelenen | Seçme |
|-------------|-----------|--------|-----------|------------|-------|
| Acil Yardım | 34 FOP 49 | 0 | GÜNEYBATI | | |
| Acil Yardım | 34 FOP 41 | 0 | BATI | | |
| Acil Yardım | 34 FOP 91 | 0 | BATI | | |
| Acil Yardım | 34 FOP 48 | 0 | GÜNEY | | |
| Acil Yardım | 34 FVD 28 | 68 | GÜNEYBATI | | |
| Acil Yardım | 34 FVD 27 | 0 | KUZEY | | |

GÜZERGAH BİLGİSİ

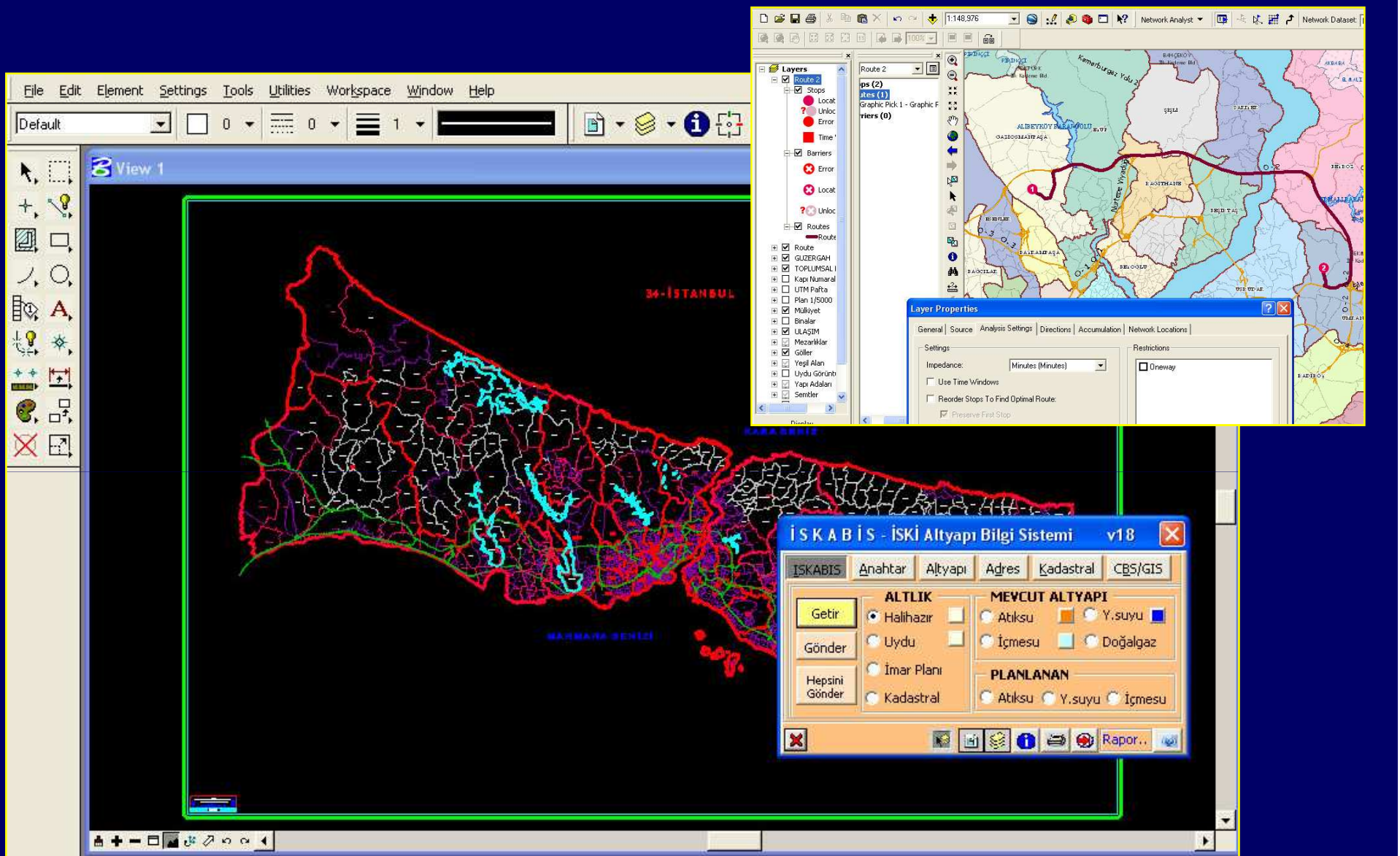
Başlangıç Tarihi: 20.03.2007 Güzergah Göster

Bitiş Tarihi: 20.03.2007 Güzergah Sil

Simülasyon Hızı: Onda Güzergah Rapor

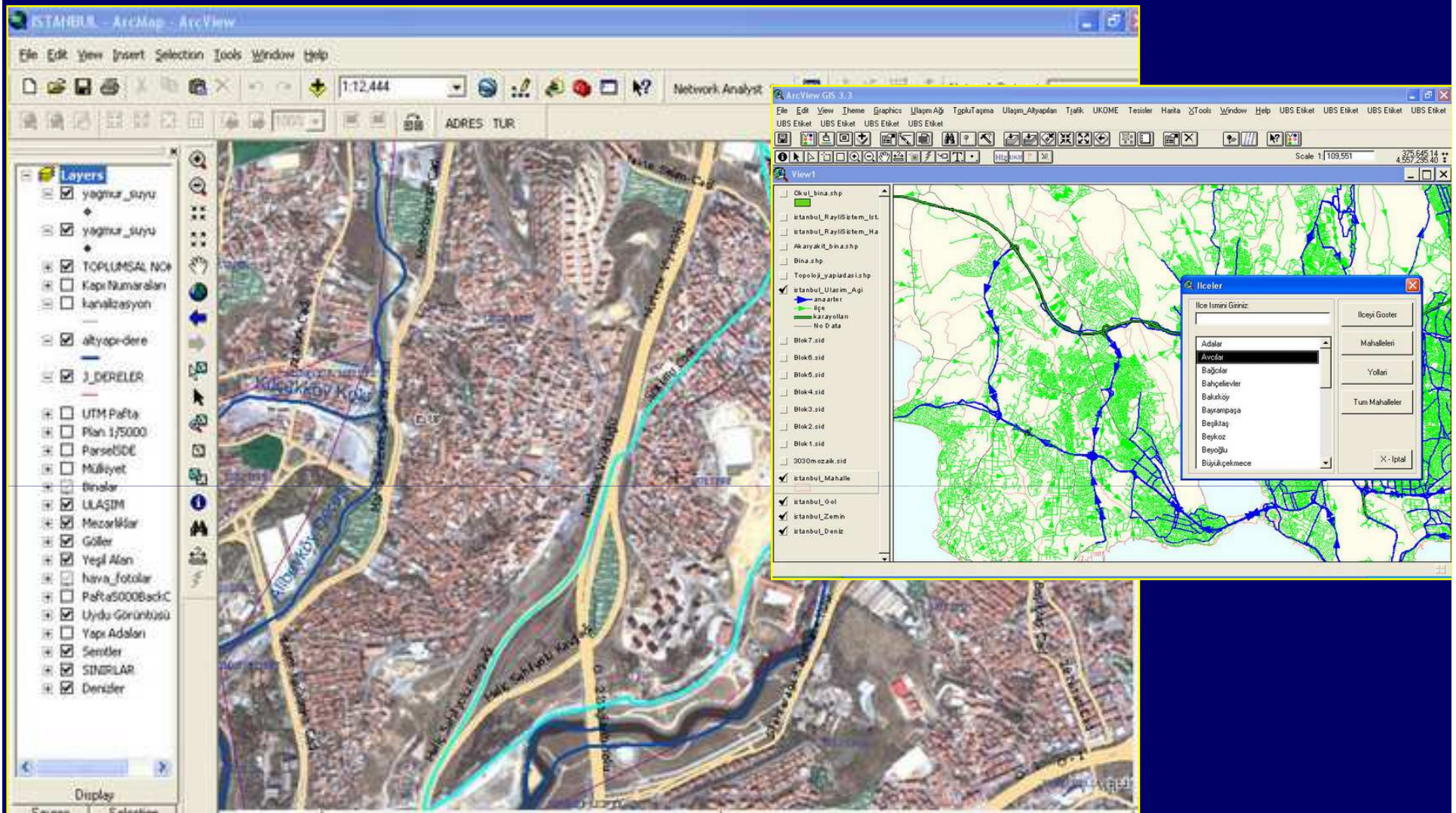
GIS Servers:

* Vehicles are being monitored by using GIS.



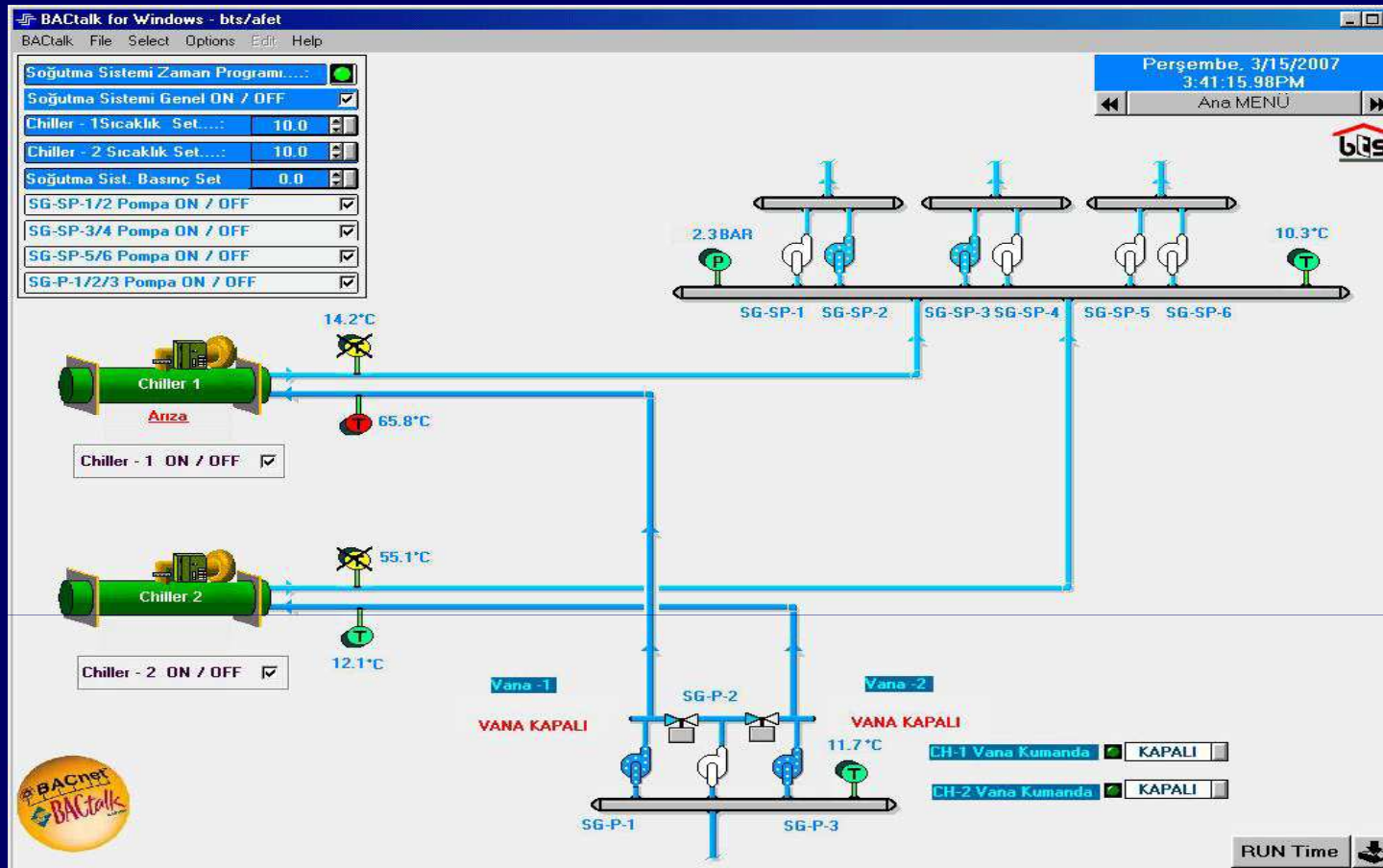
GIS Servers:

* All the data on infrastructure, buildings, roads...etc. is available in the system.



GIS Servers:

* Emergency facilities and transportation analysis can be determined and examined.



Automation System: Heating and cooling system, level of room temperatures, pumps of fire and air pressure tank, illumination, fuel and water tanks can be controlled by this automation system.

UPS and Generators: Online working 2 UPS with 100 kVA exists. There are three generators. One of them is 1100 kVA and two of them are 550 kVA.



IP Telephone System : CISCO IP Telephone System is available.

Video Conference System: Three video conference devices in different locations in AKOM provide communication between Istanbul Governorship, Istanbul Metropolitan Municipality, Istanbul Police Headquarter, Kandilli Observatory and AKOM.



LIVE BROADCAST VEHICLE

Mobile Live Broadcast vehicle was bought to serve for AKOM and other units in a potential disaster case.

MOBILE COMMAND VEHICLE

Mobile Command Vehicle is for in use of unusual conditions. The vehicle is equipped with newest communication devices (Telephone, Wireless phone, GPS , fax, server etc).

COMMUNICATION VEHICLES

10 communication vehicles with 4 satellite phones were purchased.

SATELLITE COMMUNICATION

There are 78 satellite phones from
2 different operators.

(24 Stationary Satellite Phone)

(54 Mobile Satellite Phone)



INTERNET

3 ways for internet
access

| | |
|--------------|-----------|
| LocalNetwork | 60 Mbit/s |
| ATM | 10 Mbit/s |
| ADSL | 2 Mbit/s |





TRAFFIC AND MULTI DIRECTIONAL CAMERAS

The images of 175 important junction are transferred on live time. Also, directions of the cameras can be controlled from our center.



TRAFFIC AND MULTI DIRECTIONAL CAMERAS

10 cameras are established at the important locations of the city. These cameras will be used for affective response activities at a potential disaster.



TRAFFIC AND MULTI DIRECTIONAL CAMERAS

Fire brigade Cameras: 15 mobile teams are established and the images that are taken can be transferred to AKOM.

Mobese Cameras: According to the protocol, 350 Mobese camera images of Provincial Police Department can be monitored form AKOM.

AKOM CARRIES OUT THE STUDIES ON 5 MAIN TOPICS:

1- SCIENTIFIC AND TECHNICAL STUDIES

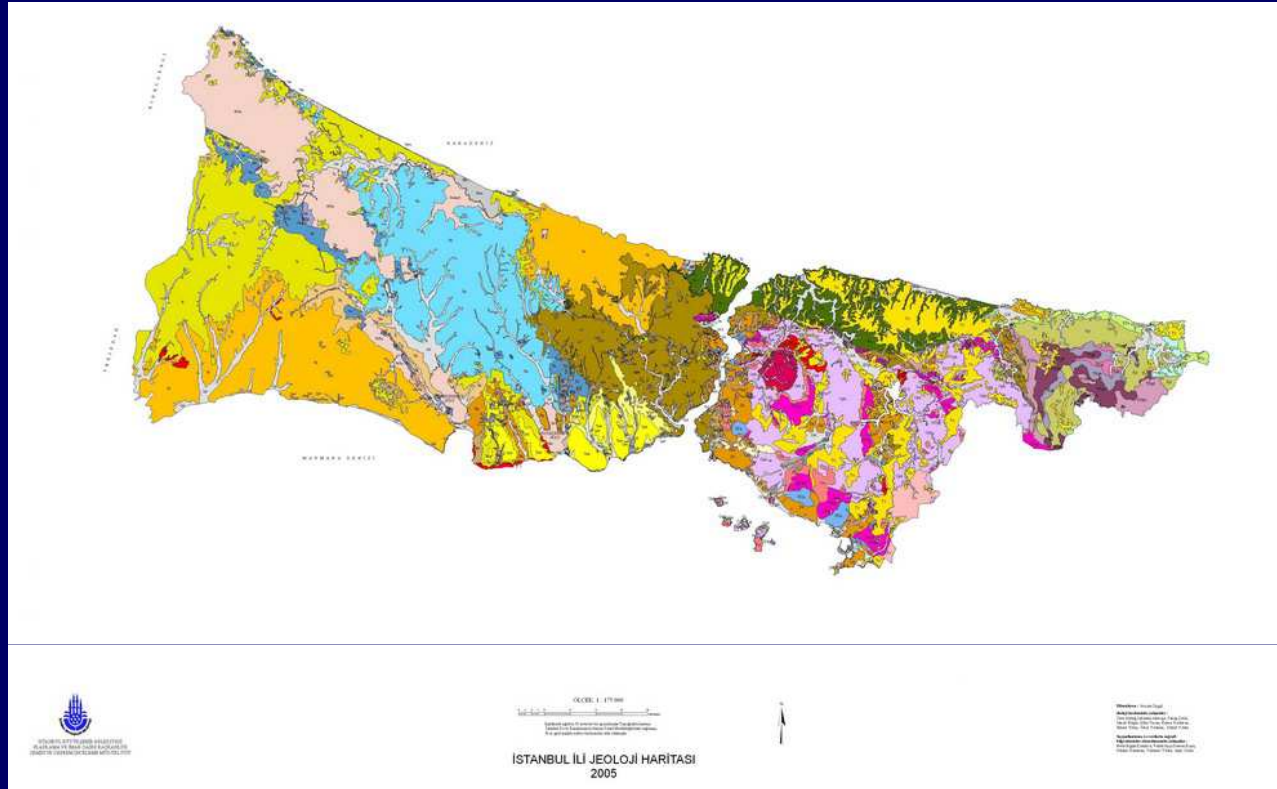
2- STUDIES ON BUILDING SAFETY

3- STUDIES ON VEHICLE-EQUIPMENT AND RESCUE STAFF

4- STUDIES ON COMMUNICATION AND INFORMATION TECHNOLOGIES

5- OTHER STUDIES

1- SCIENTIFIC AND TECHNICAL STUDIES



URBAN GEOLOGY STUDIES

1/5000 scaled Land use maps for development plans, Geotechnical/Geological Mapping studies for Istanbul in 27 district are completed by Earthquake and Soil Investigation Directorate and are approved by General Directorate of Disaster Affairs.

1/25.000 scaled geology studies are completed in the whole province area which is defined by the law no:5216.

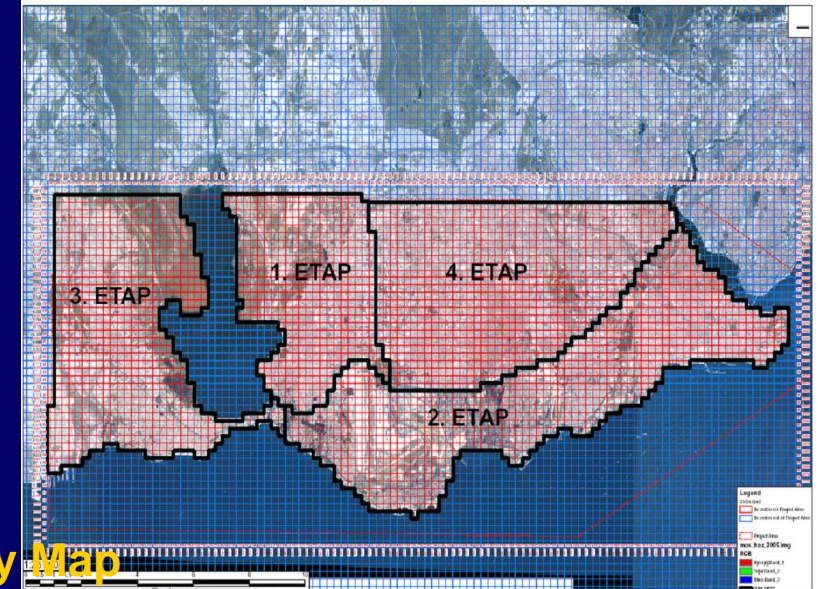
MICROZONNING REPORT and PREPARATION OF MAPS

The studies that are going to be done in the “**Southern part of European Side**” project which covers 182 km² of Istanbul:

- . 1/2000 scale of **Slope Map**
- . 1/2000 scale of **Geology and Engineering Geology Map**
- . 1/5000 scale of **Source water depth map**
- . 1/5000 scale of **Ground Shaking Map**
- . 1/2000 scale of **Liquifaction Map**
- . 1/2000 scale of **Landslide Map**
- . 1/2000 scale of **Flooding Map**
- . 1/5000 scale of Vs (0-30) **Shear Wave Velocity Map**
- . 1/2000 scale of **Ground Map according to the Earthquake Code**
- . 1/2000 scale of **Ground Suitability Map**
- . 1/2000 scale of **Ground Classification Map** according to NEHRP

Also;

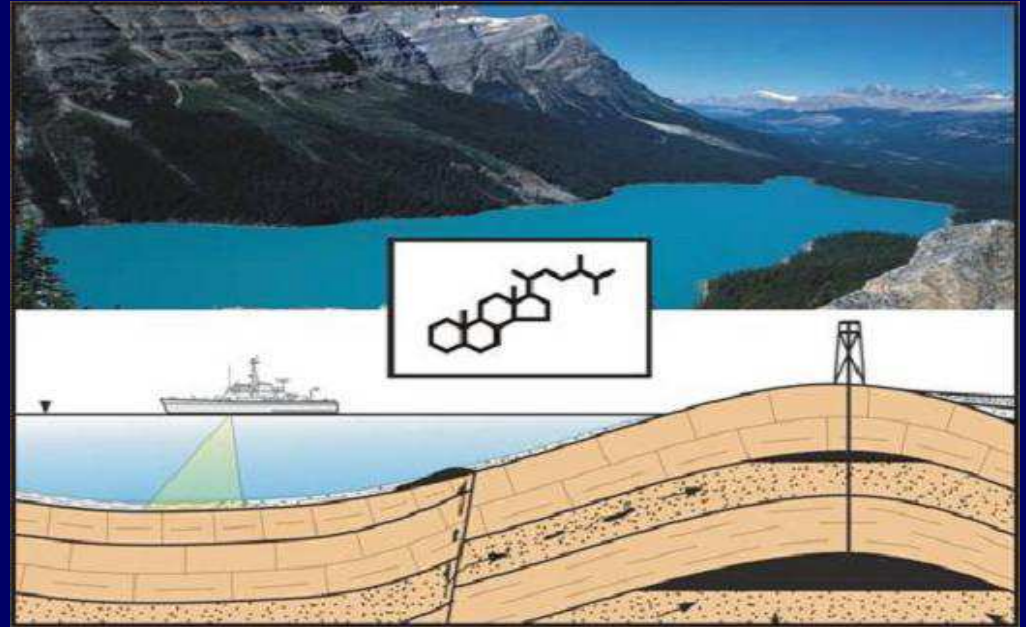
- . 1/25.000 scale of Earthquake Hazard Map for whole Istanbul
- . 1/2000 scale of Tsunami Hazard Map for whole Istanbul coast areas



**Microzoning studies for Anatolian side are targeted to start within this years.*

STUDIES ON FAULTS and LANDSLIDES

Researches on landslides and faults under the sea of Marmara is continuing with ITU and MTA



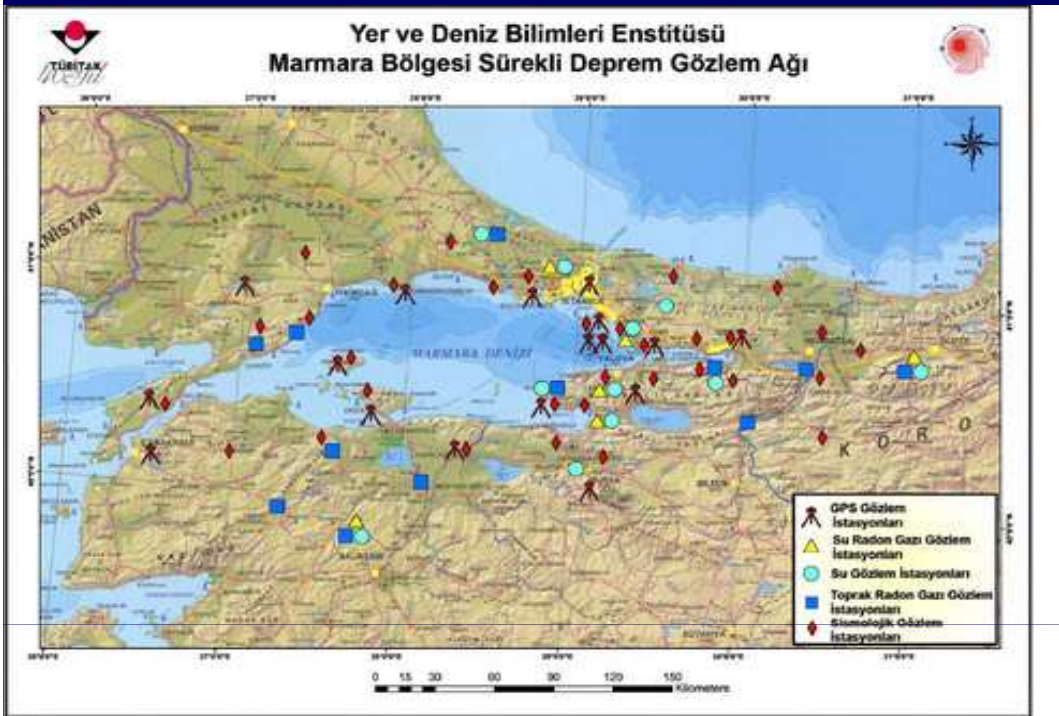
FORESIGHT

In cooperation with TUBITAK, Risk Management System for European Union Countries (FORESIGHT) Project under the European Union 6th Framework Program is completed.

EVALUATIONS OF REPORTS

“GROUND SURVEY REPORTS” of our Municipality and Districts for Urban Planning Issues are being evaluated according to the existing code. 1200 report were evaluated in 2006.

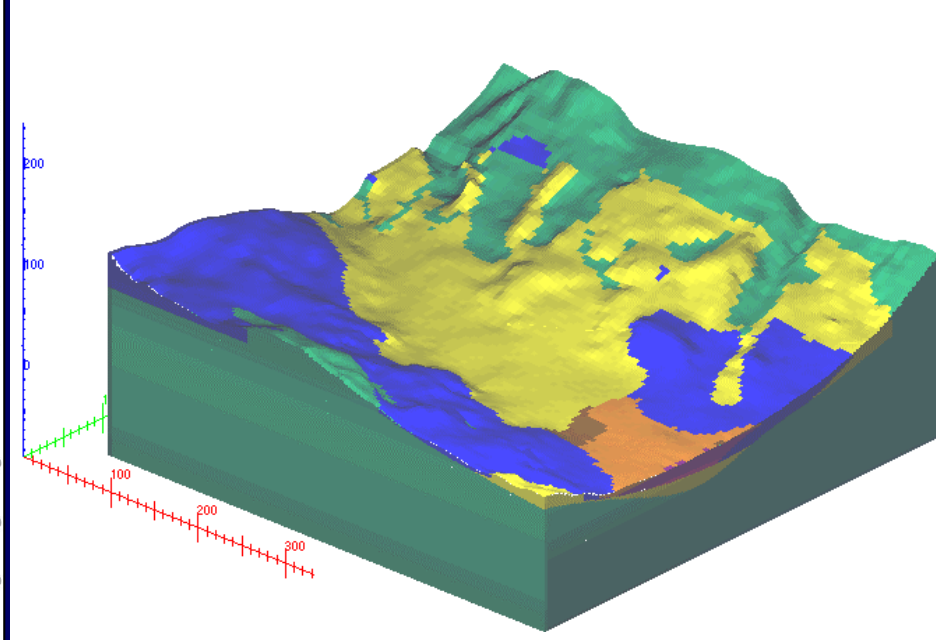
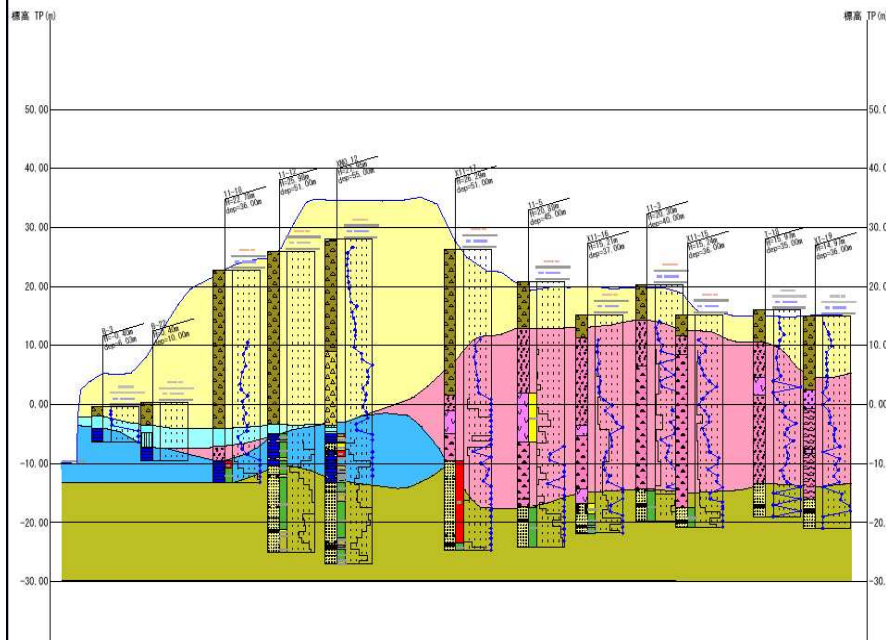
1- SCIENTIFIC AND TECHNICAL STUDIES



EARTHQUAKE STATIONS and EARTHQUAKE MONITORING PROJECT:

Earthquake Monitoring and Record Stations are established in cooperation with B.U. Earthquake Observatory for monitoring the micro earthquake activities.

In cooperation with TUBITAK, physical and chemical changes of the ground waters and daily radon gas changes are being monitored and the relation with a possible earthquake are being watched at the 16 hydraulic stations which are placed on the existing fault lines in Marmara Region.



DATABASE ON GROUND ENGINEERING

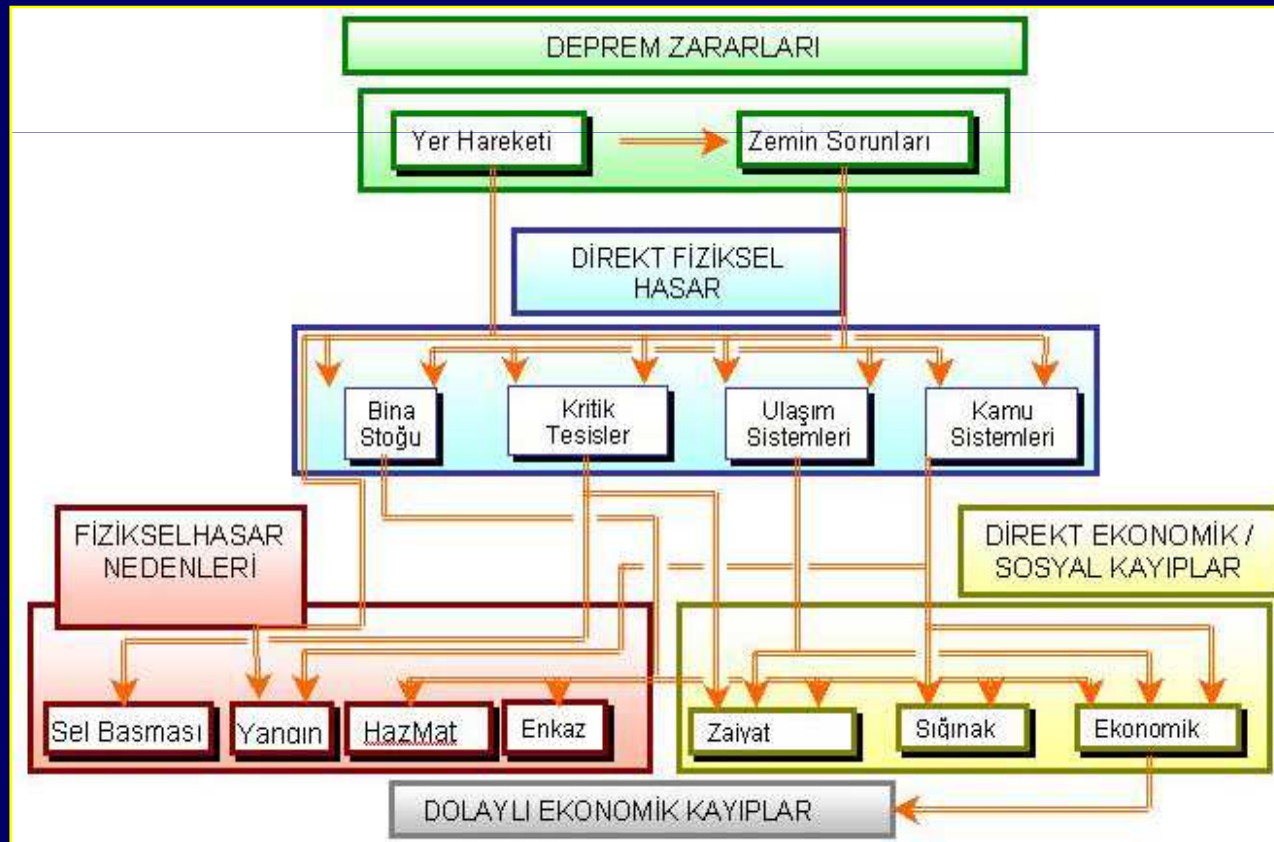
All of the ground engineering data prepared for Metropolitan area are digitised.

STUDIES ON GROUND CLASSIFICATION

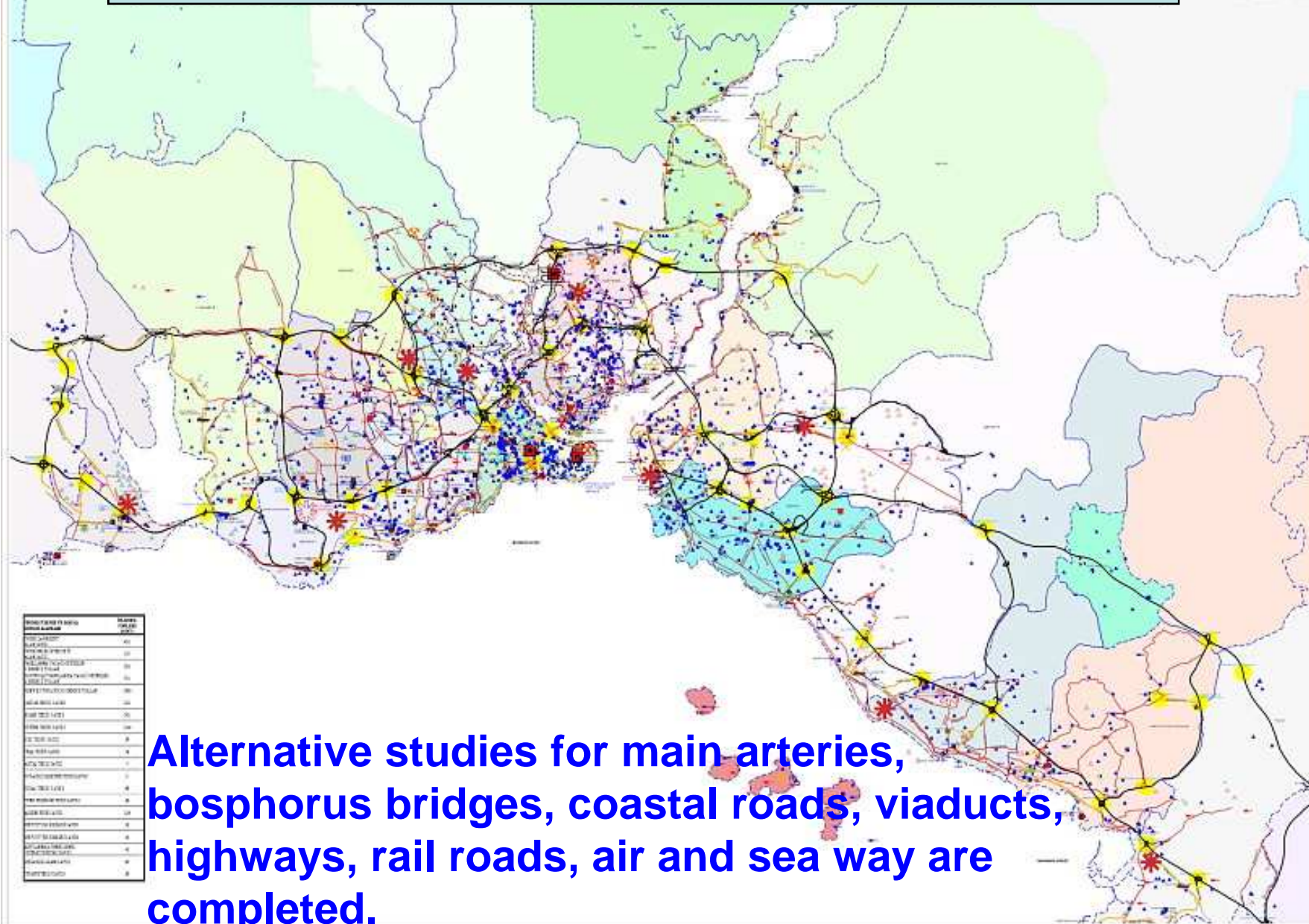
In the scope of Earthquake analysis research project the microtremor Vs shear wave velocity will be estimated for the ground classification of Anatolian Side are implemented with TUBITAK and Kandilli Observatory.

HAZTURK : To develop American FEMA patented HAZUS program to national scale of HAZTURK version for to use in pre-disaster, disaster time and post-disaster. The aim of the project which is in cooperation with SPO, TUBITAK and ITU is; emergency management, risk mitigation, planning, preparedness, response and rehabilitation.

Similar type of this program is being used in the world. The implementation of this program in Istanbul has an essential importance.



EMERGENCY TRANSPORTATION PLAN FOR ISTANBUL



| YOLUN ADI | UZUNLUK (KM) |
|--------------|--------------|
| 1. KATMERCİ | 40 |
| 2. KATMERCİ | 40 |
| 3. KATMERCİ | 40 |
| 4. KATMERCİ | 40 |
| 5. KATMERCİ | 40 |
| 6. KATMERCİ | 40 |
| 7. KATMERCİ | 40 |
| 8. KATMERCİ | 40 |
| 9. KATMERCİ | 40 |
| 10. KATMERCİ | 40 |
| 11. KATMERCİ | 40 |
| 12. KATMERCİ | 40 |
| 13. KATMERCİ | 40 |
| 14. KATMERCİ | 40 |
| 15. KATMERCİ | 40 |
| 16. KATMERCİ | 40 |
| 17. KATMERCİ | 40 |
| 18. KATMERCİ | 40 |
| 19. KATMERCİ | 40 |
| 20. KATMERCİ | 40 |
| 21. KATMERCİ | 40 |
| 22. KATMERCİ | 40 |
| 23. KATMERCİ | 40 |
| 24. KATMERCİ | 40 |
| 25. KATMERCİ | 40 |
| 26. KATMERCİ | 40 |
| 27. KATMERCİ | 40 |
| 28. KATMERCİ | 40 |
| 29. KATMERCİ | 40 |
| 30. KATMERCİ | 40 |
| 31. KATMERCİ | 40 |
| 32. KATMERCİ | 40 |
| 33. KATMERCİ | 40 |
| 34. KATMERCİ | 40 |
| 35. KATMERCİ | 40 |
| 36. KATMERCİ | 40 |
| 37. KATMERCİ | 40 |
| 38. KATMERCİ | 40 |
| 39. KATMERCİ | 40 |
| 40. KATMERCİ | 40 |

Alternative studies for main arteries, bosphorus bridges, coastal roads, viaducts, highways, rail roads, air and sea way are completed.



AKOM MEETINGS AND ORGANIZATIONS

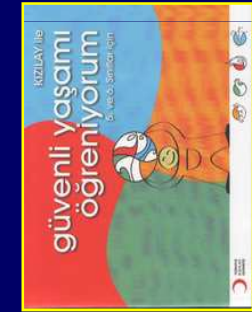
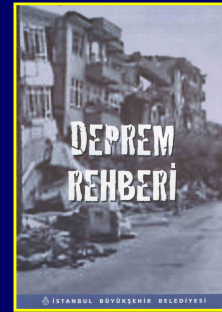
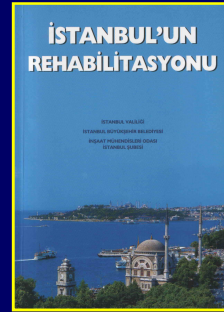
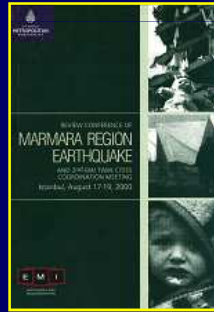
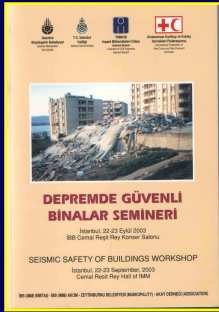
264 meeting on disaster were held in AKOM. Also, preparedness meetings on world wide organizations (NATO meeting, Formula 1, Final League of Championship, etc.) were done.



INTERNATIONAL MEETINGS AND PUBLICATIONS

- “2nd Earthquakes and Mega Cities Initiative” meeting was held in Istanbul by the sponsorship of municipality.
- “Istanbul Earthquake and Safe Buildings” meeting was held by the attendance of the academicians and specialists of Turkey, and the papers were compiled in a book.
- A symposium with the name of “Rehabilitation of Istanbul” was held.

1- SCIENTIFIC AND TECHNICAL STUDIES



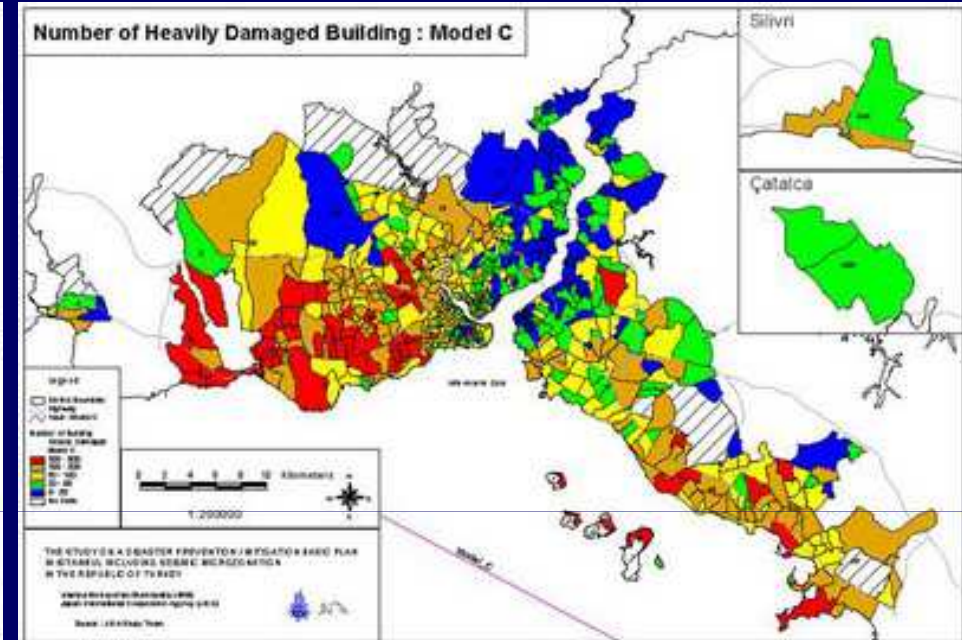
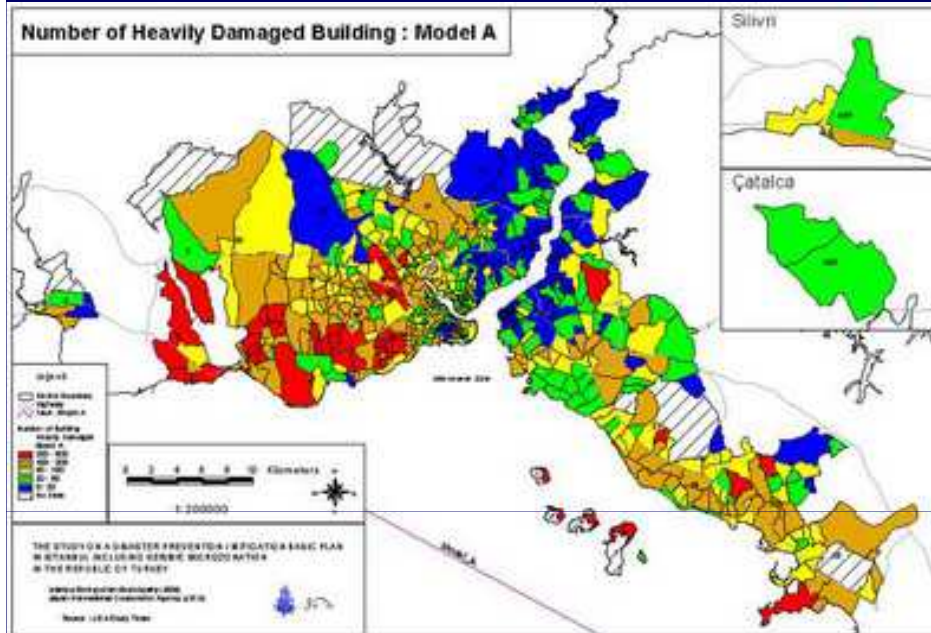
EDUCATION STUDIES

Fire Brigade – IBITEM, Directorate of Emergency and Rescue Services, Secretariat of Civil Defense, AKOM had trained 70.000 people on fire, rescue and first aid. In addition, for to make citizens conscious of earthquake different types of books and handbooks are distributed.

2- STUDIES ON BUILDING SAFETY

**Model A:
Magnitude: 7,5**

**Model C:
Magnitude: 7,7**



MICROZONING AND DISASTER PREVENTION/MITIGATION BASIC PLAN (DIAGNOSIS)

This project was done in cooperation with Japan Cooperation Agency. Sub-district based possible substructure and infrastructure damages were estimated according to 4 different scenario earthquakes.

POSSIBLE DAMAGE AND LOSS ESTIMATION

ACCORDING TO IMM – JICA STUDY:

If an earthquake with 7.7 or 7.5 magnitude occurs;

Approximately 3.040.000 household (9.000.000 people) in 750.000 building will be affected !

- ✓ 50.000 - 60.000 heavily damaged buildings,
- ✓ 500.000 - 600.000 homeless people,
- ✓ 70.000 - 90.000 life loss,
- ✓ 120.000 to 130.000 heavily wounded, 400.000 slightly wounded people
- ✓ 1.000 - 2.000 water pipe damages,
- ✓ 30.000 natural gas service box damages,
- ✓ Rupture at 3% of the electricity lines,
- ✓ 140 million tons of debris,
- ✓ 40 billion US\$ economic loss are estimated,
- ✓ Rescue operations for 1.000.000 people,
- ✓ 330.000 tents.

ISTANBUL EARTHQUAKE MASTER PLAN (EMPI)

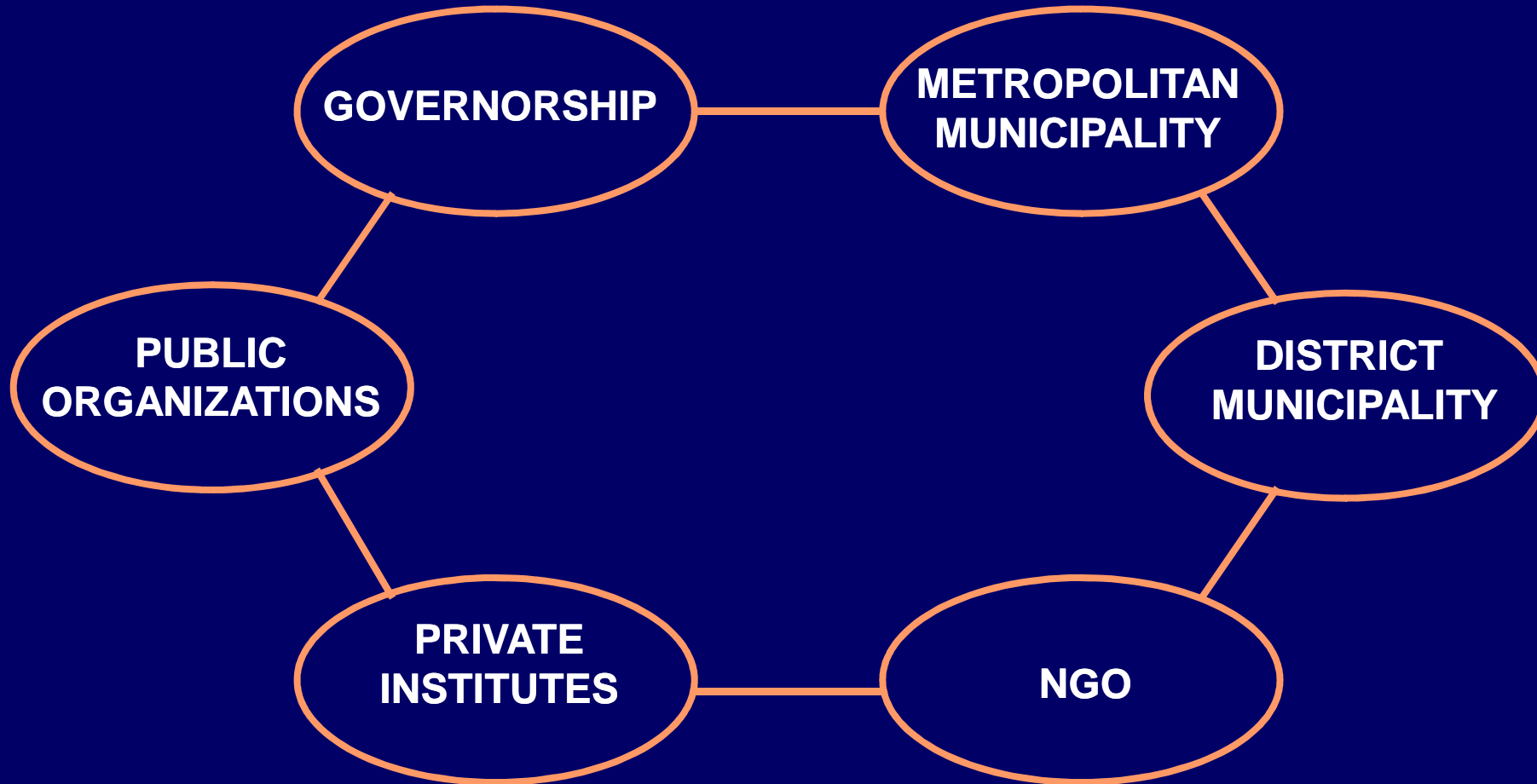
The scope of Earthquake Master Plan for Istanbul comprised of works to be done in the following areas;

- **Assessment of current situation**
- **Seismic assessment and rehabilitation of buildings**
- **Legal issues**
- **Land use issues**
- **Financial issues**
- **Educational issues**
- **Social issues**
- **Risk and disaster management issues**

Studies that must be completed and planned under the above topics are continuing in stages under a programme.

ISTANBUL EARTHQUAKE MASTER PLAN (EMPI)

is a social contract between



Identifying responsibilities commitments, methods of supervisory functions

Heavily Damaged Districts

10 Risky District



EMİNÖNÜ

FATİH

BEYOĞLU

ZEYTİNBURNU

BAKIRKÖY

BAHÇELİEVLER

AVCILAR

BAYRAMPAŞA

K.ÇEKMECE

ADALAR

JICA-EMPI EVALUATION RESULTS

BUILDING RISK SURVEYS ARE STILL CONTINUING IN ISTANBUL

* 16.030 building is evaluated in Zeytinburnu

* Risk surveys of 38.580 building in Fatih, 60.938 building in Küçükçekmece is continuing.

Building survey will be completed with in 1,5 to 2 years.

3- STUDIES ON VEHICLE-EQUIPMENT AND RESCUE STAFF

DEPARTMENT OF FIRE BRIGADE

- 61 Fire Brigade Station
- 4.545 fireman
- 461 different types of vehicle
- 2 chartered fire craft
- 3 rapid response helicopter
- 72 type of rescue equipment in every station



Generator

Cable Reel

Projector



Hydraulic Cutter and Separator



DEPARTMENT OF FIRE BRIGADE

RESPONSE VEHICLE (No:3)

is a vehicle which has the following properties;

- Extinguishing,
- Cooling,
- Debris Removal,
- Evacuation,
- Ventilation,
- Demolition,
- RC drilling
- Crane etc.



DEPARTMENT OF FIRE BRIGADE

Vehicles Planned for Factoring

(in 2007)

- | | |
|---|-----------|
| 1- 6x6x6 Rescue Vehicle for Disaster | 45 |
| 2- 6x6x6 Fire Extinguisher | 45 |
| 3- Disaster Response and Extinguishing Vehicle | 10 |





FIRE CRAFTS

2 fire craft is rented for to extinguish the industrial and forest fires.



HELICOPTER

3 emergency response helicopters (rescue-search, first aid) have been hired. 72 heliports are built to various important locations.

DIRECTORATE OF EMERGENCY AND RESCUE SERVICES

- 17 emergency response station
- 101 doctor
- 125 nurse and emergency ambulance technician (ATT)
- 28 ambulance



DIRECTORATE OF EMERGENCY AND RESCUE SERVICES

ACTIVITIES

- Emergency Health Services
- Trainings on First Aid for Volunteers
- Public Health 'Attention' Seminars
- Studies on Disasters
- Relief for Freezing People
- Serves as Lifeguard at the Beaches of Istanbul



Municipality's Search & Rescue Team

- 49 search and rescue staff
- 6 rescue dog
- 5 4x4 Mercedes type rescue vehicle
- 8 different type of rescue vehicle
- 2 rescue boat
- 30 tent
- Wireless phones, satellite phones



ACTIVITIES OF SEARCH AND RESCUE TEAM OF MUNICIPALITY

- First Aid
- Search and Rescue
- Disaster Relief



3- STUDIES ON VEHICLE-EQUIPMENT AND RESCUE STAFF

DIRECTORATE OF ROAD REPAIRMENT AND MAINTANANCE

Works in 9 Different Regions

With 2.172 staff and 724 vehicle



DIRECTORATE OF ROAD REPAIRMENT AND MAINTANANCE

| <u>TYPE OF VEHICLE</u> | <u>NO</u> |
|----------------------------|--------------|
| ➤ Snow Plow –Salt Sprinkle | : 216 |
| ➤ Vehicle with plow | : 191 |
| ➤ Loader | : 34 |
| ➤ Boschung | : 40 |
| ➤ Truck | : 63 |
| ➤ Pickup truck | : 35 |
| ➤ Solution Tanker | : 50 |
| ➤ Combined Vehicle | : 26 |
| ➤ Crane | : 69 |
| <u>Total</u> | <u>: 724</u> |



IGDAS (Istanbul Gas Distribution Company)

- 632 staff
- 60 emergency response team and equipment
- 157 vehicle

8 automatic shut off valves are installed for earthquake.

93 valves were installed to the locations where the ground conditions are different.

Also regional regulators and service boxes has an automatic shut off system.



ISKI (Water and Sewage Company)

- Search and Rescue Team with 23 staffs
- Electrical and mechanical team with 16 staffs
- Network team with 13 staffs
- Supply pipe team with 12 staffs
- Purify team with 3 staffs
- Water porter team with 3 staff
- 1 full equipped search and rescue vehicle



HAMIDIYE COMPANY

All the necessary studies are completed for supplying the drinking water and 400 of civic water tank owners are informed.

Water and sewage infrastructure installations are completed for the temporary settlement areas which are designated by Sub-district Governors and District Municipalities



DIRECTORATE OF SOCIAL AND ADMINISTRATIVE AFFAIRS

Halkalı Logistical Support Center:

The center with an area of 12.000 m² serves for a capacity of 100,000 person/day. Center has kitchens, and storages.

The center is used to store the disaster relief materials for international and national aids. Center has storages in the Anatolian side as well.

Also “Mobile Kitchen” is on service for serving for 20.000 person/day with two types of meal..



PUBLIC BREAD COMPANY

Is in charge of covering the bread demand with capacity of 2 million per day, in any case of disaster.

Continues to produce bread in 3 big factories at Kartal, Edirnekapı and G.O.Paşa.

The organization plan for bread distribution is completed. And will be able to produce bread for 1 week with LPG.

Studies on long lasting bread production is completed. Studies on the storage, distribution and production of 5 million of bread with high calorie and nutritional value is completed.



IETT (ISTANBUL BUS OPERATOR) AND OTHER COMPANIES

Preparations on the transportation of the public from earthquake region to other regions are completed. New vehicles are bought and rescue teams are established.

Also assigned for opening the isolated roads and debris removal works with own vehicles and subcontractors vehicles.



IDO (SEA BUSES CORPORATION)

- 81 pier,
- 25 sea bus,
- 8 ferry-boat,
- 32 ship for passenger,
- 15 ship for vehicle,
- 12 boat for passenger
- 2 ship



Preparations to provide sea transportation for possible disaster are completed and supported by the newly bought vehicles and established rescue teams.

Health equipments are installed to the sea busses.

Studies to increase the number of sea piers are continuing.

DIRECTORATE OF CEMETERIES

Works on studies for post-disaster funeral operations.

- **81 funeral car**
- **18 intercity funeral car (air-conditioned) (Special condition capacity: 5)**
- **5 unit of normal wc (Total cabin number: 22)**
- **5 normal morgue (Total funeral capacity: 76)**
- **9 mobile wc**
- **6 mobile morgue (Total funeral capacity: 120)**
- **66.000 body bag**
- **6.600 concrete graves (Pendik) are done.**

Also;

- **10.000 unit of concrete graves are planned to be built in İkitelli-Başakşehir.**

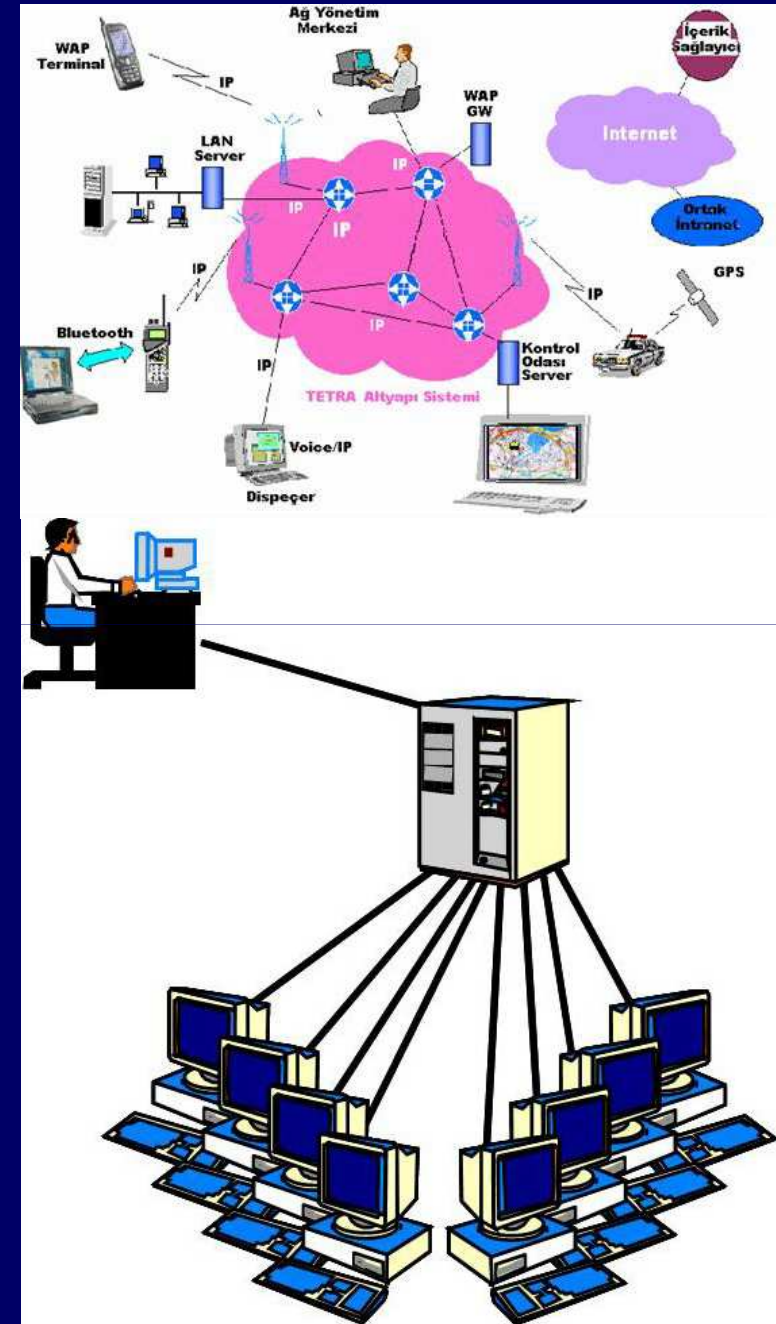
**4- STUDIES ON COMMUNICATION AND INFORMATION
TECHNOLOGIES**

ISMEP PROJECT

In scope of ISMEP Project Components for Strengthening of Emergency Preparedness and Disaster Management are;

- 1..Improvement of Emergency Communication Systems
- 2..Establishment of Disaster Management Data System Studies

It is aimed to organize the communication infrastructure for metropolitan municipality and related agencies.



5- OTHER STUDIES

➤ **Directorate of Emergency and Rescue Services, has established two storages for to store the medical materials in use of a potential disaster. The locations of Emergency stations are in European side and in Anatolian side materials for use in a potential disaster.**

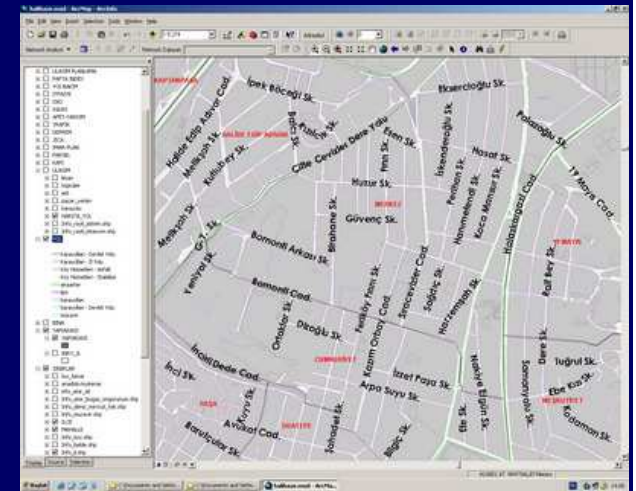


➤ **2500 unit of simple but effective Emergency Health Set has been prepared for to use at first stage of a crisis**

➤ **Health materials are placed to the sea buses that are related to Istanbul Sea Bus Company for the use of response to injured people.**



- **Disaster based GIS studies are almost completed. The road inventory is completed.**
- **Public bread buffets, I.E.T.T. Bus Stops, Neighborhood Governorates, Police Stations, Water distribution points etc. are already shown on GIS.**
- **410 portable toilets were bought for in use of emergency.**
- **15 emergency response stations (formed of equipments and teams of Fire Brigade, İgdaş, İski, Emergency Aid and Road Maintenance) are planned to be established to the various locations in Istanbul.**



Portable toilet

- **4.450 hydrants** are located to the important roads and streets of Istanbul. Studies are continuing to increase the number.
- **Fire Risk Map is done for Istanbul.**
- **10 automatic meteorology stations** are established for monitoring the weather situation more detailed.
- **“AKOM Emergency Relief Plan”** is prepared, data inputs are still continuing.
- **“AKOMCELL”** is implemented for alerting the public with messages of mobile phones for possible or on going events.
- **Studies for constructing “Command Control Building”** near AKOM Building is continuing.



INDONESIA RELIF ACTIVITIES

- Health Services,
- Public Bread Services,
- Environment and Solid Waste Management,
- Road and Infrastructure Services,
- ISKI- Water Purification Services



PAKISTAN RELIEF ACTIVITIES

| | |
|------------------------|-----------------|
| •Body Bag | :10.000 unit |
| •Life Container | : 500 unit |
| •Long Lasting Bread | :10.000 unit |
| •Food Packet | : 5.000 unit |
| •Cake | : 1.200 unit |
| •Water | : 1.000 package |
| •Flour | : 10 ton |
| •Milk powder | : 30 ton |
| •Boot | :30.000 unit |
| •Sweater | :30.000 unit |
| •Blanket | :10.000 unit |
| •T-Shirt | : 4.200 unit |
| •Hat | : 4.200 unit |
| •Bread Production Unit | : 1 unit |
| •Generator | : 1 unit |
| •Water Sanitation Unit | : 3 unit |



LEBANON RELIEF ACTIVITIES

2 million YTL aid was done to the region after the Lebanon war

RELIEF ACTIVITIES IN EAST AND SOUTHEAST OF TURKEY

2 million YTL of aid was done to Batman



- In the relief activities;
- 99 staff,
 - 2 sewage truck,
 - 1 tenpin,
 - 3 washing vehicle,
 - 4 JCB are used.



RATHER THAN TO RESCUE PEOPLE FROM THE DEBRIS

OUR AIM

**IS TO PREVENT PEOPLE FROM STAYING UNDER THE
DEBRIS.**

www.ibb.gov.tr/akom